

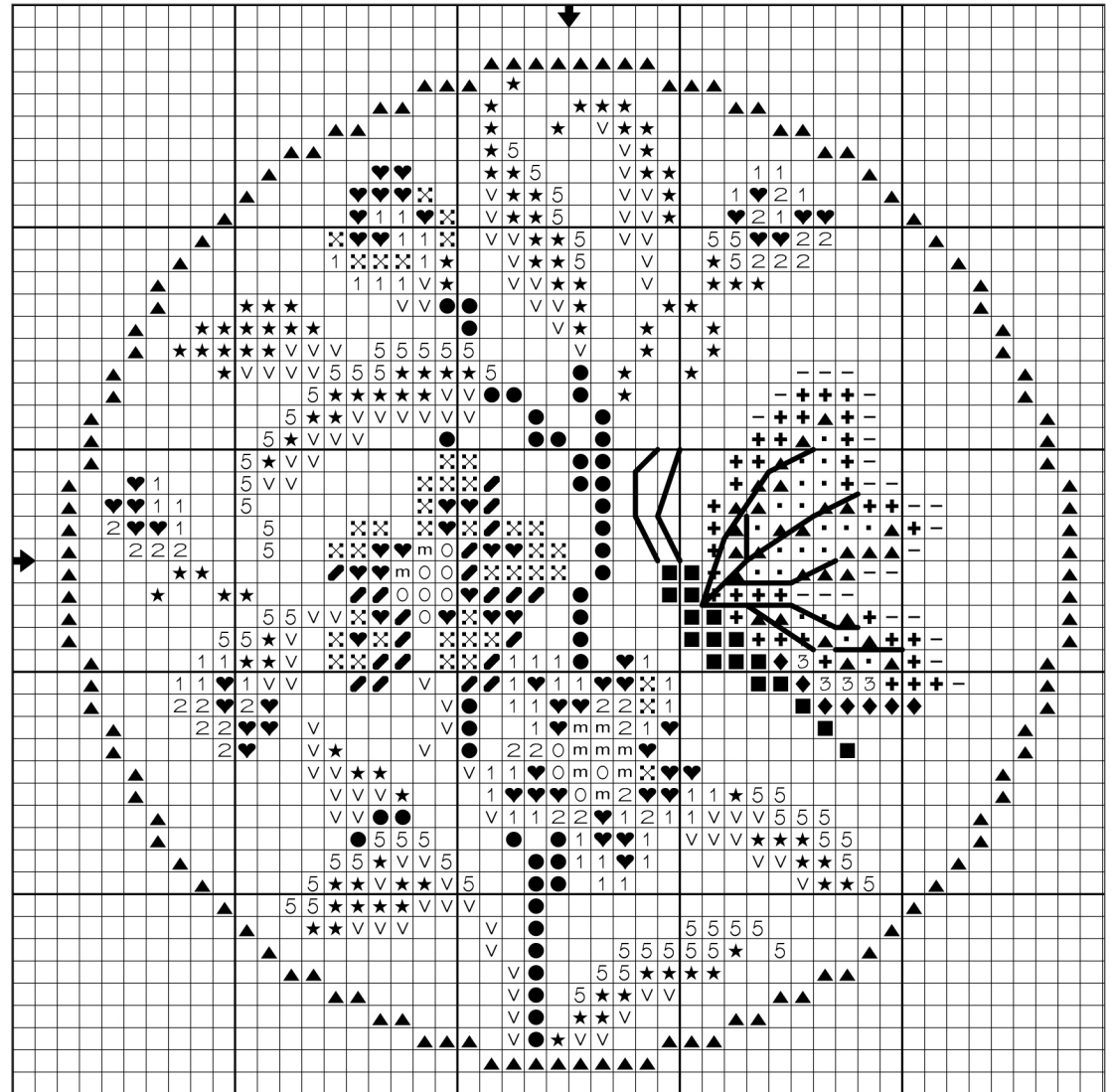
Design Count: 46w X 46h stitches
18-count: 2-1/2" w X 2-1/2" h

Cross stitch – two ply

DMC	Color	DMC	Color
■	310 Black	815	Garnet-MD
3	402 Mahogany-VY LT	●	936 Avocado Green-VY DK
2	600 Cranberry-VY DK	v	3011 Khaki Green-DK
⊗	601 Cranberry-DK	★	3012 Khaki Green-MD
♥	603 Cranberry	5	3013 Khaki Green-LT
1	605 Cranberry-VY LT	◆	3776 Mahogany-LT
-	796 Royal Blue-DK	•	3840 Lavender Blue-LT
+	798 Delft Blue-DK	○	3854 Autumn Gold-MD
▲	799 Delft Blue-MD	m	3855 Autumn Gold-LT

Back stitch – one ply

— 310 Black



The Janlynn Corporation allows a photocopy / enlargement of this chart for personal use. Selling or distributing copies of this chart is strictly prohibited.